



## Two-Touch 5-Wire Resistive Touch Controller

### Key Features

- ◆ 5-Wire Resistive Touch Sensor Compatible
- ◆ 2-Touch
- ◆ USB2.0 Operation
- ◆ USB Power
- ◆ Screen Sizes Currently Available: 3.5" to 24"
- ◆ Glove, Stylus & Finger Compatible
- ◆ Negligible RF Emissions
- ◆ Suitable for Harsh Environments
- ◆ Fully Operational in Intense Rain and Salt Water
- ◆ Low Cost
- ◆ Responsive
- ◆ Standard Resistive Controller Size
- ◆ Standard Resistive Controller Connections

### Applications

- ◆ Touch Screen Monitors
- ◆ Kiosk / POS
- ◆ Mobile Computing
- ◆ Healthcare Devices
- ◆ GPS Devices

A D Metro's new solution is for applications that require resistive touch sensors, but also demand two-touch capability.

Our recently-developed (patent pending) two-touch resistive touch screen controller works with standard 5-wire resistive sensors to deliver two-touch capability demanded by today's GUIs in applications facing the demanding environments that only resistive touch sensors can endure.

The board design is dimensionally identical to many common single touch resistive controllers. As well, the connectors used are compatible with our current line of single touch resistive controllers to allow seamless and easy conversion to our new two-touch controller.

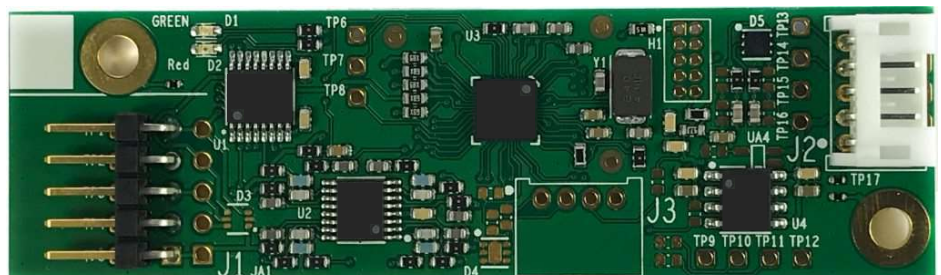
At 100 touch points per second for single touch and 70 touch points per second for two-touch, this solution easily facilitates fast and smooth touch operations.

The controller also offers HID Plug & Play in Windows with Linux soon to follow.

A D Metro's Two Touch Controller brings new capabilities to the reliable tried and tested 5-Wire Resistive technology

This new technology offers:

- 1) Full two-touch operation, ideal for pinch, zoom, rotate and drag gestures.
- 2) All the performance and capabilities normally associated with 5-wire resistive touch technology.



# Two-Touch 5-Wire Resistive Touch Controller

## Datasheet

### Sensor Mechanical Specifications

Detection Type ..... 5-Wire Resistive  
 Aspect Ratios ..... Customizable Including 4:3 and 16:9

### General Touch Parameters

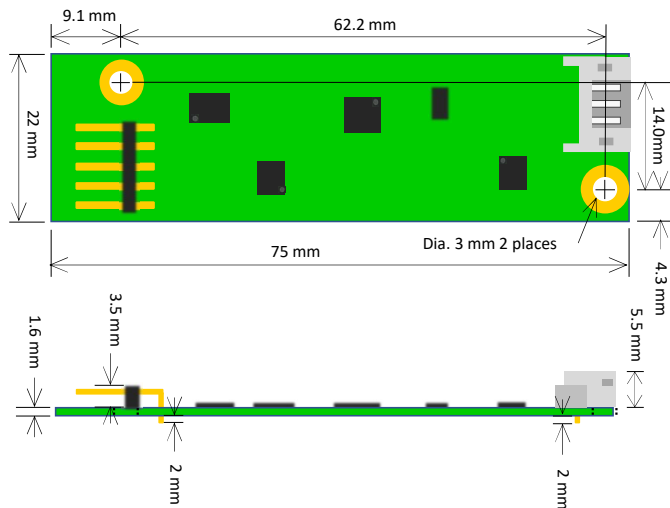
Input ..... Any Object  
 Max Number of Touches ..... 2  
 Palm Masking ..... Yes  
 Touch Force (1- touch) ..... 60 g  
 Touch Force (2-touch, per touch) ..... 70 g

### Communication

Touch Report Resolution ..... 15-bit  
 Reports Per Second (1-touch typical) ..... 100  
 Reports Per Second (2-touches typical) ..... 60  
 USB ..... USB HID Compliant

### Controller Dimensions

Controller Dimensions ..... 3.0"x 0.87"x0.32" (75 x 22 x 8.5mm)



### Controller Part Numbers

Two-touch, 5-Wire USB2, Non-latching ..... CR2T-02-5WN-01  
 Two-touch, 5-Wire USB2, Latching ..... CR2T-02-5WL-01  
 USB-A controller cable, 2m ..... 10-CARU-EXT

### Interface

Controller Interface ..... USB-2.0  
 Powering ..... USB

### Operation System Compatibility

Built-In HID OS Support ..... Windows 7, 8, 10, 11

### Sensor Environmental Specifications

Operating Temperature ..... -40°C to +75 °C  
 Storage Temperature ..... -50°C to +95 °C  
 Relative Humidity ..... 95% RH at 60°C non-condensing

### Regulatory

CE/FCC Part 15 Class B unintentional radiation ..... Compliant  
 UL /MIL RF immunity greater than 10V/m ..... Yes  
 RoHS3 ..... Compliant  
 REACH ..... Unaffected



**WARNING:** This product can expose you to chemicals including Nickel which is known to the State of California to cause cancer. For more information, visit [www.P65Warnings.ca.gov](http://www.P65Warnings.ca.gov).



1390 Star Top Rd.  
 Ottawa, ON, Canada K1B 4V7



Disclaimer: Technical specifications are provided for guidance and subject to change without notice. Specifications and performance may depend on sensor dimensions, selected options, installation and mounting. Please contact A D Metro for confirmation of the applicable specifications, individual sensor drawings, as well as installation and mounting best practices.

#### ABOUT US:

Established in 1988, A D Metro designs, manufactures and supplies innovative touch screen technology solutions for original equipment manufacturers (OEMs), system integrators and value added resellers. Everyday A D Metro's products are touched by millions of people around the world. Our ULTRA product line is the most durable resistive touch screen sensor available on the market and our projected capacitive (PCAP) touch screen solutions simplify design and accelerate time to market.

Contact us, for more information on our innovative touch screen products, enhancements and custom manufacturing solutions.